



## SOUND STORM LABORATORIES

3451 Lunar Court, Oxnard CA 93030

### TECHNICAL ASSISTANCE

[www.soundstormlab.com/customer-support](http://www.soundstormlab.com/customer-support)

888-387-8676 US Toll-free

805-751-4855 Customer Service

## ML41B

**BLUETOOTH® • SINGLE-DIN MP3-COMPATIBLE**

DIGITAL MEDIA FM RECEIVER



0817

iPod® and iPhone® are registered trademarks of Apple Inc. in the U.S. and other countries. Sound Storm Laboratories is not affiliated with Apple Inc.

The Bluetooth® word mark and logos are registered trademarks owned by Bluetooth SIG, Inc. and any use of such marks by Sound Storm Laboratories is under license. Other trademarks and trade names are those of their respective owners.



## USER'S MANUAL

## ML41B

**BLUETOOTH® • SINGLE-DIN MP3-COMPATIBLE**  
DIGITAL MEDIA FM RECEIVER



**Congratulations on your purchase of a Sound Storm Laboratories  
Multimedia Receiver.**

**It has been designed, engineered and manufactured to bring you  
the highest level of performance and quality, and will offer you  
years of entertainment pleasure.**



#### **Safety Instruction**

- This unit is designed to work with a +12 V DC, Negative Ground electrical system.
- When replacing the fuse, always replace with the same type and fuse rating.
- To avoid electric shock caused by short circuit , or any unnecessary damage and fire, please prevent the product from a wet environment and water.

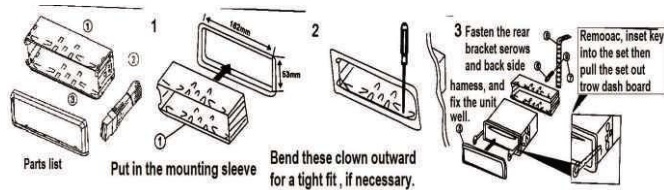
## Installation and Removal Steps

### Installation

Before starting any electrical work on your vehicle, always make sure to disconnect the Negative (ground) battery cable.

This is security installation; please refer to the illustration and detailed step-by-step installation:

1. Using the radio sleeve, insert into the DIN sized opening of the vehicle or if you are using an installation kit, insert into the installation kit.
2. Using a flat-head screw driver, bend the tabs around the sleeve to secure into the opening
3. Find a location behind the radio where the back strap will be attached to the vehicle.
  - a. The rear chassis bolt will be attached to the unit and through the back strap to secure.



## Troubleshooting

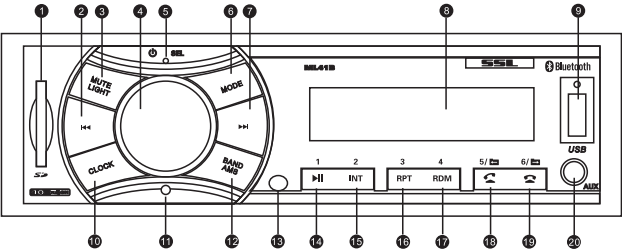
If any issues should arise that are not covered below, please contact our technical service department.

Faults	Causes	Solutions
Bluetooth	Bluetooth cannot be used	Check if Bluetooth on mobile device is turned on, and is paired and connected.
Does not play MP3 from mobile device	Bluetooth not connected. Compatibility issue	Please see above for Bluetooth. Check to see if your mobile device is compatible with audio streaming (A2DP)
Will not power on	It is not powered on	If the vehicle power is properly installed, turn the key to the ACC position.
	Fuse is burnt.	Replace the fuse with same type and rating. Check all connections and make sure they are properly terminated.
No sound	Audio is muted	Adjust the volume to your required level.
	Wires are improperly connected.	Check the wiring diagram and make sure wires are properly connected.
Failure of reading, USB/SD	Poor contact	Please pull out the device and re-insert it. The unit will only play MP3 files
Noises and sound distortion	Speakers	Check speakers
	Speaker cables are shorted.	Properly connect wires.
Failure of Radio	Antenna not working	Check your vehicle for a powered antenna connection
	Weak signal	Change the "DX" or "Local" settings
Stop working	CPU can not work normally	Turn off the power and power it on again.
	Files are damaged.	Skip this file and please select next file.

Specifications

Bluetooth-----	Bluetooth v2.1
Bluetooth Supported Profiles -----	A2DP, HFP
Maximum RF Transmit Power -----	Class II
Maximum Power-----	40 W x 4 @ 4 Ω
Speaker Impedance -----	4-8 Ω
Frequency response-----	40Hz-18KHz
Signal-to-noise ratio -----	> 65dB (FM Mode)
Volume control -----	Bass ±9 dB @ 100 Hz
	Treble ± 9dB @ 10 KHz
Tuning Range-----	87.5 MHz - 107.9 MHz
Usable Sensitivity-----	<25 dB
Separation-----	<33 dB
T.H.D.-----	> 0.7 % (Stereo)
Signal Selectivity -----	> 60 dB
Power Requirements-----	+12 V DC (Negative Ground)
Dimensions Approx. -----	7.2"x 2.1" x 3.7" (w/h/d)
Approx. Mounting Dimensions -----	7.4" x 2.3 " x 5.2"(w/h/d)
Mass-----	Approx. 0.8 lbs

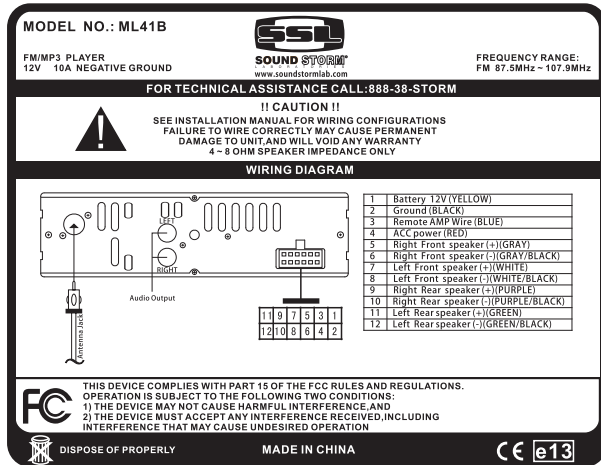
Front Panel



Key Description

1 SD Port	8 Display screen	15 Preset 2 / Intro
2 ◀◀ PREV	9 USB Port	16 Preset 3 / Repeat
3 Mute/Light	10 Clock	17 Preset 4 / Random Play
4 Volume, Power, EQ	11 Reset	18 Preset 5 / Answer
5 Microphone	12 Band/Scan	19 Preset 6 / End Call
6 Source	13 IR (Remote Receiver)	20 AUX Input
7 ▶▶ NEXT	14 Preset 1 / Play, Pause	

## Wiring Diagram



## Disconnect /connect mobile phone Bluetooth

Short press  $\frac{4}{\text{RDM}}$  to stop Bluetooth function, short press  $\frac{4}{\text{RDM}}$  again to connect Bluetooth.

( Only for the matched mobile phone Bluetooth)

## Bluetooth Audio Streaming

While in Bluetooth mode, press  $\frac{1}{\text{II}}$  to start playing music from your mobile device\*

(\*Note: your device must support A2DP, for music playback)

To control tracks, use the  $\ll$  and  $\gg$  buttons.

## AUX-In Mode

### AUX

Change the MODE to AUX. A 3.5mm cable is required from the device to the unit.

(Note: Power, Mode, Volume, Loud, Mute are the only functions that function in Aux Mode)

## Folders

Press **5** /  for Previous Folders

Press **6** /  to Advance Folders

## Direct Track Access

Press and Hold **2** / **INT** , use the volume knob to rotate and select the track. The track will only be able to be selected in the current folder.

## Bluetooth

### Bluetooth Pairing

On your device (phone), go to the Bluetooth Settings and search for: "SSL ML41B"

### Answering Calls

To answer an incoming call, on the unit Press **5** /  on the unit.

When using the remote, Press **5** / 

### Ending/Ignore a Call

To End/Ignore a call, Press **6** /  on the unit.

While using the remote, Press **6** / 

### Redial

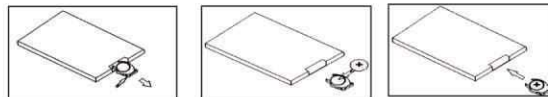
While in the Bluetooth mode, Press **5** /  to redial the last number.

### Private Call

During a call to transfer to the mobile device, Press **3** / **RPT**  
The audio will mute for the duration of the call.

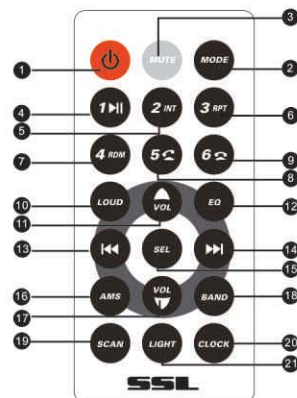
To re-direct the call back to the unit, press **3** / **RPT** to transfer from the mobile device.

## Remote Control Battery



1. Press and hold the small lock and pull to remove the battery holder.
2. Put the battery into slot in the right way as illustrated.
3. Insert the battery holder into remote control.
  - a. Please note battery polarity when re-interesting.

## Remote Functions



- |  |                           |                   |
|--|---------------------------|-------------------|
| 1  Power On / Off | 8 Preset 5 / FOLDER-      | 15 SEL            |
| 2 MODE   | 9 Preset 6 / FOLDER+      | 16 AMS            |
| 3 MUTE   | 10 LOUD                   | 17 VOL-           |
| 4 Preset 1 / PAUSE/PLAY  | 11 VOL+                   | 18 BAND           |
| 5 Preset 2 / INT   | 12 EQ                     | 19 SCAN           |
| 6 Preset 3 / RPT   | 13 PREV / Previous Folder | 20 CLOCK          |
| 7 Preset 4 / RDM   | 14 NEXT / Next Folder     | 21 Light On / Off |

## Basic Operation

### Power On / Off :

In standby status, long press **1** to power it off, short press **1** into power it on.

### Mode

When powered ON, press **MODE** button to cycle through the Sources:

**FM→USB→SD→AUX→BT→FM**

(Note: **SD** and/or **USB** will not display if Media is not present)

Default Source: **FM**

## Volume

In the state of power on, rotary encoder to let the volume up/down.

By remote, short press **VOL-** button to minus volume, short press **VOL+** button to plus volume.

Volume Range 0 ~ 40

## Audio Adjustments

### Volume "SEL"

When the unit is ON, to access Audio settings, press the volume knob:

**BASS > TREBLE > BALANCE > FADER > LOUD > EQ > ST > DX > USA > VOL**

(Note: with **ST/DX/USA** when it's in **FM**)

**BASS:** To adjust, select bass, and rotate volume left or right: -7 ~ +7

**TREBLE:** To adjust and rotate volume left or right: -7 ~ +7

**BALANCE:** To adjust and rotate volume left or right: L7 ~ R7

**FADER:** To adjust and rotate volume left or right: F7 ~ B7

**LOUD** Rotate left or right to turn it on or off.

Default: OFF

**ST:** Turn it left or right to turn it ST or MONO.

Default: ST

**DX:** (Distance): Turn it left or right to turn it DX or LOCAL.

Default: DX

**Tuner Region:** Rotate left or right to choose USA or European.

Default: USA

### EQ

To select, and cycle through EQ rotate volume: **POP > JAZZ > CLAS > ROCK > COU > NORM**

### Mute

Press the **MUTE** button to completely mute the audio output.

### Button Illumination

To turn OFF, press and hold **MUTE** for 2 seconds

To turn ON, press and hold **MUTE** for 2 seconds

By remote, short press **LIGHT** button to turn ON / OFF button light.

## Clock Function

Press **CLOCK** to display clock

If there is no operation within 3 seconds (10 seconds when in standby state), Press and Hold (2 seconds) to remove clock from display

Hour/Minute adjust method: in clock mode, Press and Hold "**CLK**" for 2 seconds.

Press **CLK** to change between hour and minute, when it's in this mode, the "00" will flash, to change rotate Volume. Rotating Left will decrease the time, while rotating Right will increase the time.

To store the time, Press and Hold "**CLK**"

## FM Tuner

### Automatic Scan

Press and Hold "**BAND**" for 2 seconds

(Remote) Press "**SCAN**" button

To cancel scan press "**BAND**", or by remote "**SCAN**"

### FM Bands (FM 1, FM 2, FM 3)

Press "**BAND**" to cycle through FM 1, FM 2, FM 3, etc....

Each Band can store up to 6 Presets, for a total of 18 FM presets.

### Manual /Auto tuning

Press **◀◀** or **▶▶** to tune manually.

Press and Hold either **◀◀** / **▶▶** to search in its respective direction. It will automatically stop once the first signal is received.

## USB/SD Playback

### Play/Pause

Press the **1** **▶|** to pause the music.

- 1) The music will automatically start playing from the media when it is inserted.
- 2) If the USB/SD source is changed, it will pause the music that is currently playing and resume once the USB/SD source is chosen again.

### Scan

To **SCAN**, Press **2/INT** to start scanning the tracks on the media.

Each track will play for 10 seconds.

To cancel Scan mode, press **2/INT**

### Repeat

To **REPEAT** a track, press the **RPT** button. The repeat icon will flash on the display.

To cancel the **REPEAT** function, press the **RPT** button once more.

### Random

Press **4/RDM** to enter Random mode.

To cancel Random mode, press **4/RDM**