

M335USA

IN-DASH, DETACHABLE FRONT PANEL
MP3-COMPATIBLE CD AM/FM RECEIVER
WITH USB AND FRONT AUX INPUT

1.2013



SOUNDSTORM®
L A B O R A T O R I E S

3451 LUNAR COURT, OXNARD CA 93030

PHONE: 888.38.STORM

805.983.8008

FAX: 805.983.7068

TECHNICAL SUPPORT

www.soundstormlab.com

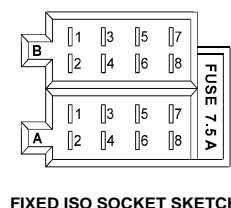
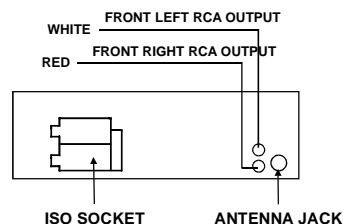


User Manual

M335USA

IN-DASH, DETACHABLE FRONT PANEL
MP3-COMPATIBLE CD AM/FM RECEIVER
WITH USB AND FRONT AUX INPUT

WIRES CONNECTION



FIXED ISO CONNECTOR A

- 1.
- 2.
- 3.
4. CONSTANT +12 V DC
5. AUTO ANTENNA B+
- 6.
7. ACC +12 V DC
8. GROUND

FIXED ISO CONNECTOR B

1. REAR RIGHT SPEAKER (+)
2. REAR RIGHT SPEAKER (-)
3. FRONT RIGHT SPEAKER (+)
4. FRONT RIGHT SPEAKER (-)
5. FRONT LEFT SPEAKER (+)
6. FRONT LEFT SPEAKER (-)
7. REAR LEFT SPEAKER (+)
8. REAR LEFT SPEAKER (-)

SPECIFICATION

GENERAL

Supply Voltage	DC 12 V. Negative Ground
Current Consumption	Max.7.5A
Power Output	4x60W
Number of channels	2 STEREO channels.
Unit Dimensions	(L x W x H): 7" x 6.5" x 1.97" 178 x 165 x 50 (mm)

FM SECTION

Frequency range	87.5MHz -107.9MHz
Effective sensitivity	3uV.
I.F Frequency	10.7MHz.

AM SECTION

Frequency range	530KHz - 1710KHz
Effective sensitivity	40dB.
I.F Frequency	450KHz

Preamp Output: 1 V Max

CD PLAYER

System	MP3 Audio System.
Suitable CDs	MP3, CD,CD-R,CD-RW Disc
Frequency characteristics	20Hz-100Hz < 5dB 10KHz-20KHz < 5dB.
S/N Ratio to CD	50dB [1KHz]

Preface

Thank you for purchasing this car audio product.
Please read this manual carefully before operating this car audio product.
Please keep this manual for future use. It will be helpful to you if you are encounter any operational problem.

Selecting fine audio equipment is only the start of your musical enjoyment.
Now it is time to consider how to maximize the enjoyment you will get from knowing how to work your new car stereo receiver.

We hope you enjoy using this product and encourage you to always listen at a moderate, safe sound level to avoid any possible hearing damage or loss. If you listen to excessively loud sound over time, your hearing can adapt to higher volumes and what sounds "normal" to you may be quite harmful and can cause you to have permanent hearing loss. So please practice "safe sound" and always listen at moderate sound levels only.

Start with your volume control at the lowest setting, and slowly increase the level until you can hear it comfortably and clearly, free from distortion.
Once you have established this comfortable sound level, leave it there.

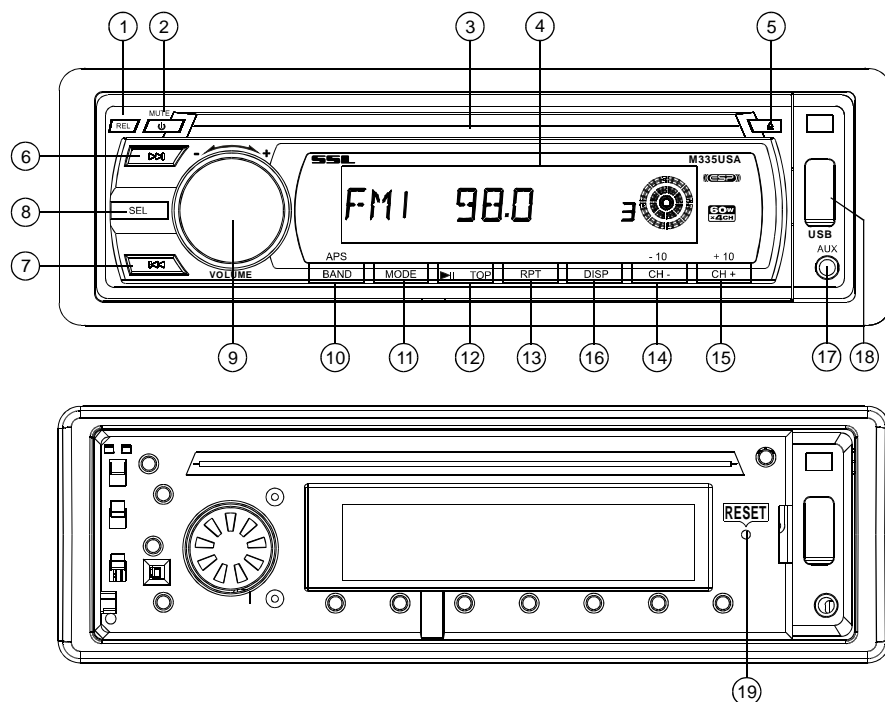
WARNING!

To reduce the risk of fire or electric shock, do not use the unit in the rain or moisture environment.

To prevent direct exposure to laser beam, do not try open the enclosure.
Visible and invisible laser radiation when open and interlocks defeated.

To protect our environment, do not dispose of electrical equipment in the domestic waste. Please return any electrical equipment that you will no longer use to the collection points provided for their disposal.
This helps avoid the potential effects of incorrect disposal on the environment and human health. This will contribute to the recycling and other forms of reutilization of electrical and electronic equipment. Information concerning where the equipment can be disposed of can be obtained from your local authority.

LOCATION AND FUNCTION OF CONTROLS



1. RELEASE BUTTON

Press the REL button to release the front control panel from the unit chassis, then pull it up a little to remove from the unit chassis.

2. POWER ON/OFF & MUTE

When the unit is power off, the unit comes to on by pressing any button except the RELEASE button.

When the unit is power on, press and hold the power button for more than 0.5 seconds, the unit goes into power off mode.

When the unit is power on, press the power to switch the MUTE state on/off.

3. CD SLOT

4. LCD Display

5. EJECT KEY

In the power on state, the loaded disc can be ejected by pressing the EJ key.

TROUBLE SHOOTING

Before using the check list please make all the connections first.

If you still have questions after going through the checklist, please consult your local customer service representative.

Common Symptoms	Cause	Solution
There is no power.	The car ignition is switched off.	If the power supply is properly connected to the car accessory, switch the ignition key to "ON" or "ACC".
	The fuse has blown.	Replace another fuse according to the wiring diagram.
The CDs cannot be loaded.	Presence of CD disc inside the player	Remove the disc in the player then put a new upward
The CDs are loaded only halfway into the CD tray.	The transport screws have not been removed.	Remove the transport screws before using.
The device does not work correctly (EJECT, LOAD, PLAY)	Inserting the disc in upside down	Insert the compact disc with the label facing upward
	The surface of CD is extremely dirty or it is damaged.	Clean the CD or try another CD, if this works correctly, the first CD is properly damaged.
	Temperature inside the car is too high.	Cool off until the ambient temperature returns to normal
There is no sound.	The volume control is set too low.	Turn up the volume properly.
	The device has not been correctly connected.	Check the power and earth connection according to the wiring diagram.
The operation keys do not work	1. The built-in microcomputer is not operating properly due to noise 2. Front panel is not properly fix into its place	1. Switch the device off and on again. Or press the RESET button to resume the program. 2. Reinstall the front panel
The sound of the CD player skips	The installation angle is more than 30 degrees	Adjust the installation angle to less than 30 degrees
	The surface of the road is uneven.	Wait until the road becomes smoother before playing the CD.
	The surface of CD is extremely dirty or it is damaged.	Clean the CD or try another CD, if this works correctly, the first CD is properly damaged.
No radio reception.	The antenna cable is not connected.	Insert the antenna cable firmly into the antenna socket of the device.
In automatic search mode the radio does not stop at a transmitting station.	The transmission signals are too weak.	Tune in to a radio station manually.

CARE FOR USING CD'S:

About CD-R/CD-R/W discs:

In addition to commercially-recorded audio CD's, this unit can play CD-R and CD-R/W discs. In some cases, particularly when recorded on older CD burners, some CD-R and CD-R/W discs may not play. Also, whenever you are recording a CD for playback in this receiver, it is recommended that you record at 24x or slower speed for CD-R and 4x or slower for CD-R/W to achieve higher signal quality and better playback performance.

1. To keep the disc clean:

Do not attach any sticker or adhesive tape on the disc.
Handle the disc by its edge to keep the disc clean and do not touch the surface.
Before playing a disc, wipe it off with a clean, dust-free cleaning cloth.
Wipe the disc outwards from the disc center.

2. When one has already been inserted. Doing so may damage the unit. Insert a disc with labeled surface up, or it will damage the unit.

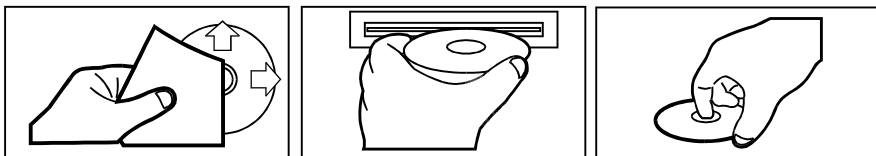
3. Do not expose the disc to direct sunlight or nearby heat sources such as heating vents, caliduct which can cause the disc to warp.
Do not leave disc in a car if it is parked in direct sunlight as that will lead to a considerable rise in the temperature inside the car.

4. Do not use any secondhand or rented disc, usually, there is glue on the surface of those discs, it will stop the unit working and damage it.

5. Always store the disc in its case for protection. Scratched up discs will produce poor sound performance and cause CD player to skip.

6. In raining day or wet area, the moisture may form on the disc or the optical parts, the playback may not be possible. If moisture forms on the disc, wipe it off with a soft cloth.
If moisture forms on the optical parts of the unit, allow the unit to sit for about one hour with power on.

7. Do not use solvents such as benzine or thinners. Commercially available cleaners or anti-static spray will damage the unit.



6&7. TUNE, SEEK, TRACK, SKIP UP / DOWN BUTTONS

a) During RADIO mode:

Press the >>| or |<< button briefly to manual tune up/down for the desired radio station frequency step by step.
Press and hold the >>| or |<< button for longer 0.5 seconds, to automatically tune up/down for the radio station frequency of strong signal.
After search radio frequency, press RPT button will show MEM x , then press RPT to store the channel, or press the CH-/CH+ to select your favor channel and then press RPT to store it.

b) During disc, USB playback mode:

Press the >>| button briefly to play next track.
Press the |<< button briefly to play the current track from the beginning of it if the playing time is more than 2 seconds.
Press the |<< button briefly to play the previous track if the playing time is less than 2 seconds.
Press the >>| or |<< button and hold to skip forwards or backwards, release to resume normal playback.

8&9.SEL(MENU) BUTTON AND VOLUME UP (+)/ DN (-) KNOB

a) Press the SEL button briefly, it is activated as selecting each mode of E. VOL.
-> VOLUME ->BASS ->TREBLE -> BALANCE -> FADER ->
When selecting a desired audio mode, rotate the VOL knob to adjust the audio effect.

In each mode, the waiting time is about 5 seconds, and the time waiting time is over, it returns to the last display mode of tuner or CD mode.

The control mode of E.VOL is operated with following numeric display.

- VOL: (MIN)00, 01,.....46, 47(MAX).
- BASS/TRE: -07, -06, ..., 00, ...+06, +07
- TRE: -07, -06, ..., 00, ...+06, +07
- BAL: 0LR9, 1LR9, ..., 9LR9, ..., 9LR1, 9LR0
- FAD: 0FR9, 1FR9, ..., 9FR9, ..., 9FR1, 9FR0

b) When pressed and hold for 2 seconds, it is activated as cyclical mode of following functions for user's selection.

- >BEEP (ON/OFF) -> USER SET(FLAT/CLASSIC/ROCK/POP)
- >VOL(LAST/DEFA) ->AVOL -> STEREO/MONO(in FM mode)
- >LOUD(ON/OFF)(in FM mode) ->CLK(ON/OFF)->CLK(12/24)mode.

When selecting a desired audio mode, press the VOL+ or VOL- button to adjust the audio effect.

BEEP ON/BEEP OFF

BEEP ON mode: The beep is generated when any key is pressed.

BEEP OFF mode: The beep sound is disabled.

VOL LAST/VOL DEFA

VOL LAST: The radio switches on at the actual volume it had when it was last switched off.

VOL DEFA: After pressing SEL button, AVOL will be displayed. Then you can pre-select a constant switch-on volume by using the VOL knob.

CLK ON/OFF

CLK ON: Clock will always show on the display when power off.

CLK OFF: Clock will disappear on the display when power off.

10. BAND BUTTON

During radio mode:

- 1) Press the BAND button briefly to select the radio broadcasting band you would like to hear. The AM/FM band is toggled cyclically through the tuning bands: ->FM 1-> FM 2 -> FM 3 -> MW 1->MW 2 ->.
- 2) Press and hold for more than 1 second, the radio searches from the current frequency and checks the signal strength level until 6 station are found. And then the 6 stations frequency are preset to the corresponding preset memory numbered bank. The auto-storage operation is implemented in the each selected band. When the auto-storage operation is finished, the radio execute the Preset Scan.
Press the CH-/CH+ to select the storage radio.

During MP3 file in disc, or USB mode:

Press BAND to turn to TRACK SEARCH mode, the LCD will display TRK T 000 and flash the biggest digit 0 that the USB Flash Drive contain. (if the number of tracks is less than 100 and more than 9, it will be TRK 00)
Then rotate the VOL knob to select the number of the flashing digit from 0 ~ 9. Then press SEL button to confirm the number and flash next smaller digit 0. With the same means, select the number of the flashing digit. After finishing selecting the number of all flashing digit, press SEL button to play the track of the selected serial number.

11. MODE BUTTON

Press the MODE button to change among tuner (radio), disc (when a disc is loaded), USB (when an USB Flash Drive is inserted) and AUX mode.

12-15. TOP/>||, INT, RPT, RDM BUTTONS

During disc, USB mode:

- 1) Press the TOP/>|| button briefly to interrupt the playback of the disc, USB. Press again to resume normal playback.
Press the TOP/>|| button and hold for approximately 0.5 seconds to play the first track of the disc, USB.
- 2) Press the RPT button once to play the current track repeatedly, press twice to play the current folder repeatedly, press thrice to play in random order, press fourth to play each track for first 10 seconds part, press again to turn off above function.
- 3) Press the -10 and +10 button to move up and down 10 tracks at a time.
When the remained total tracks is lack of 10, the both buttons are inactively.

16. DISP BUTTON

Press the DISP button briefly to display time for 5 seconds on the display, and then returns to its previous display unless the button is pressed again.
Then press the DISP button and hold for more than 1 second until the real time flashes on the display. Then you can adjust HOUR or MINUTE by rotate the VOL knob.

17. AUX INPUT JACK

Press the mode button to select auxiliary input playing mode. Then you can connect any matched external audio device to this socket. Use the volume knob to adjust volume.

18. USB PORT

In order to play the file in the USB Flash Drive, turn over the plastic cover cap then insert the USB Flash Drive into the USB Port. The system will change into the USB mode automatically, and then play the first file in the USB.

19. RESET BUTTON

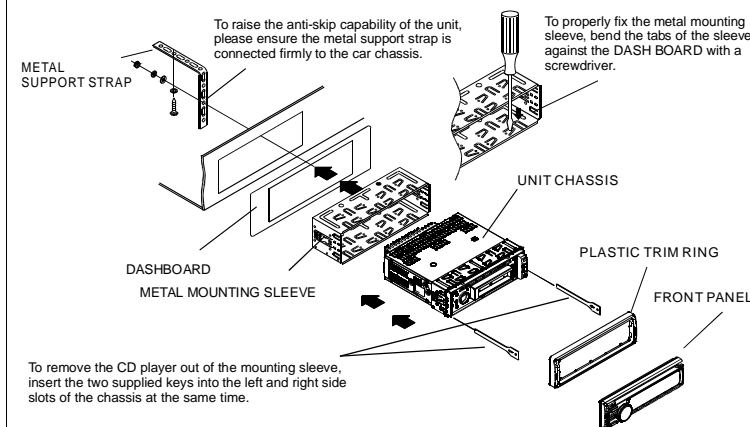
Before operating the unit for the first time, or after replacing the car battery or changing the connections. You must reset the unit.
Press this button with a cuspidal object. This operation will erase the clock setting and some stored contents.

INSTALLATION METHOD

This is an anti-theft installation method.

The main unit wears a METAL MOUNTING SLEEVE.

Please connect the wiring, eg, the Power supply, the Speakers and the Antenna according to the requirements of this Instruction Manual, then install the metal mounting sleeve into the car as per the diagram illustrated below.



NOTE

Before installing and operating the CD player, remove the metal mounting sleeve illustrated by the arrows.

Remove the two screws that protect the CD player during transportation before operating the player.

To attach the removable faceplate, insert the right side of the faceplate into the right of the CD player chassis first. Then push the left side of the faceplate into the chassis until you hear it "click".

